

# RIMAC

COMPANY PROFILE

GLOBAL INDEPENDENT INSURANCE BROKER



# Contents

---

• CEO Message	2
• Company Overview	
▪ Corporate Profile	3
▪ Core Strategy	4
• Areas of Expertise	5
• Organization Chart	9
• Management Structure	10
• Company Information	
▪ Smart Performance	11
▪ Associates	12
▪ Contact Us	13

# CEO Message

RIMAC aims at becoming a global insurance intermediary leading the insurance industry, and is to gain customers' trust and affection.



Dear our valued customers,

We, Rimac Insurance Services Co.,Ltd., have been protecting your assets from unexpected accidents and disasters and caring for your well-being since our establishment in year 1999, through our outstanding efforts and solid capabilities.

We are continuously increasing the company's value with innovative management and challenging attitudes and, as a result, we stood firm amidst the difficult domestic and foreign business environment and are now one of the leading insurance intermediary in Republic of Korea.

Our aim is to be a global insurance broker and to become one of the top independent player in Korea Republic by the year 2015.

As a progressive and energetic company, we will strive to become a global player and promise to do our utmost endeavour to meet our clients' satisfaction.

We would like to ask for your continuous interest and support for Rimac and truly wish you more prosperous future to come.

Sincerely yours,

Rimac Insurance Services Co.,Ltd.

A handwritten signature in black ink, appearing to read 'Chang Gil Lee'. The signature is stylized and written over a horizontal line.

**Chang Gil Lee**  
CEO & President

**Rimac Insurance Services Co.,Ltd.**

Shalom Bldg 3F, 8 Gyeonghuigung 1-gil,  
Jongno-gu, Seoul, Korea (03176)  
T. +82 2 776 5565 F. +82 735 5575  
www.rimac.co.kr

# Corporate Profile

Founded in year 1999, Rimac is one of the leading independent primary insurance and reinsurance intermediary in Republic of Korea.

Headquartered in Seoul, capital city of Korea Republic, Rimac’s dedicated teams of highly professional specialists offer individuals and corporations the best solutions which bring together all aspects of insurance coverage, including claims handling and risk management services.

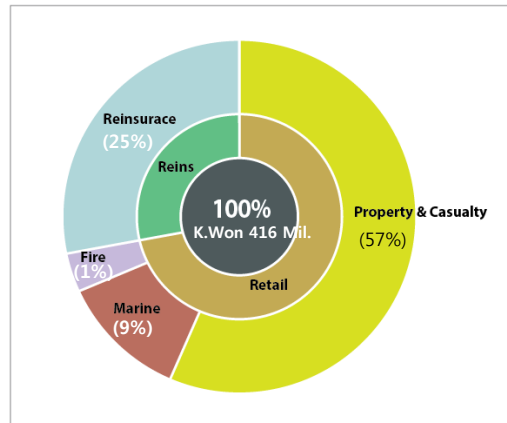
November 23, 2012 proved to be a milestone for Rimac, as it has become the first Korean reinsurance & insurance broker in Azerbaijan territory by attaining a formal approval from the Ministry of Finance of the Republic of Azerbaijan. Rimac expects that there will be abundant opportunities to deal directly with Korean interests which enter into Caspian Sea region countries.

## Total Brokerage Revenue ( as of 2016 )

### ■ Breakdown of Revenue



### ■ Breakdown of Classes



# Corporate Profile

To be the leading global independent wholesale, reinsurance and expertised professional retail broker, through :

- Exploiting improving network positioning and changing market conditions
- Building on our global network and leveraging the existing business, people and infrastructure

## ► Mission

Creating new values for customers with knowledge and global expertise

## ► Vision

A Sustaining company  
anyone would wish to work for

A Preeminent global  
financial institution

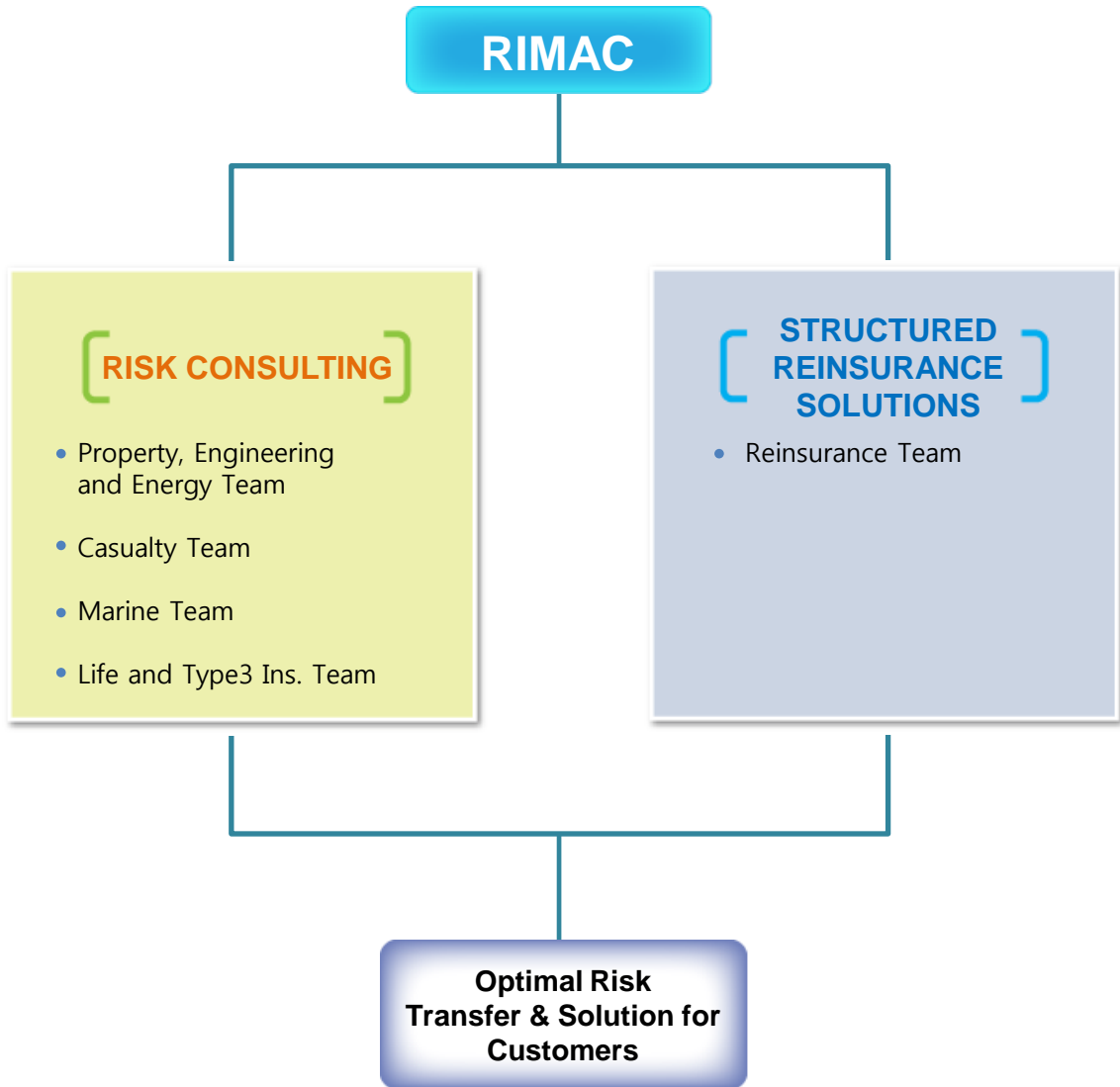
## ► Core Value

Open Communication	An open-minded company with smooth communication
Future Orientation	A company always prepared for the future and doing the utmost in the present
Preparation & Follow-up	A company that works effectively based on preparation and thorough follow-up
Competition & Cooperation	A company that maximizes its capacity through competition and cooperation
Social Responsibility	A warm-hearted company that fulfills its social responsibility

**Rimac Insurance Services Co.,Ltd.**

Shalom Bldg 3F, 8 Gyeonghuigung 1-gil,  
Jongno-gu, Seoul, Korea (03176)  
T. +82 2 776 5565 F. +82 735 5575  
www.rimac.co.kr

# Areas of Expertise



### RISK CONSULTING

Rimac's growth, activity and accomplishments over the years have established the company's reputation as an all-round and progressive company in the field

- Provision of technical consulting, as well as efficient handling of coverage and claims
- As a licensed insurance broker, bringing to the table specific expertise and vital resources to the benefit of its clients
- offering crucial and invaluable service that will help individuals and corporations alike stay ahead in today's challenging marketplace

#### • Property, Engineering and Energy

The Team is made up of experienced insurance practitioners with strong technical background covering the main disciplines in property, energy, mechanical and engineering.

With diverse expertise and intimate knowledge of local conditions and buying needs, the team strives to work closely with clients and insurers in coming up with sound, sustainable facultative structures.

#### • Casualty

The Casualty team intermediates facultative casualty and financial lines risks which comprise the following classes of business :  
Commercial General Liability, Product Liability, Personal Accident, Product Recalls, Workmen's compensation, Employers' Liability, Motor, Directors' and Officers' Liability, Banker's Blanket Bonds, Professional Indemnity, and Single Project Professional Indemnity.

The team is able to work with its clients to understand their needs and goals with customized insurance solutions that include structured products on a mono-line or multi-line classes of insurance.

**Rimac Insurance Services Co.,Ltd.**

Shalom Bldg 3F, 8 Gyeonghuigung 1-gil,  
Jongno-gu, Seoul, Korea (03176)  
T. +82 2 776 5565 F. +82 735 5575  
www.rimac.co.kr

## Areas of Expertise

- **Marine**

The marine team comprises senior practitioners with experience from the shipping industry, as well as understanding and claims handling expertise from both the primary insurance and reinsurance industry

The team possessed good understanding of our clients' operations and has built good rapport with various ship owners, shipyard and cargo interest-holders, and works closely with them to provide effective risk management solutions to address their operational needs.

- **Life and Type 3 Insurance**

The Team offers extensive experience in implementing innovative and customized solutions for private placement capabilities, ranging from low to ultra high net amount at risk solutions

Classes of business within Annuity, Injury, Medical, Personal Accident, and Nursing Insurance.

**Rimac Insurance Services Co.,Ltd.**

Shalom Bldg 3F, 8 Gyeonghuigung 1-gil,  
Jongno-gu, Seoul, Korea (03176)  
T. +82 2 776 5565 F. +82 735 5575  
www.rimac.co.kr



## Areas of Expertise

### STRUCTURED REINSURANCE SOLUTIONS

Rimac visions to be a wholesale broker of choice.  
Rimac is at the forefront to advise its clients of their reinsurance and risk solution needs across the value chain.

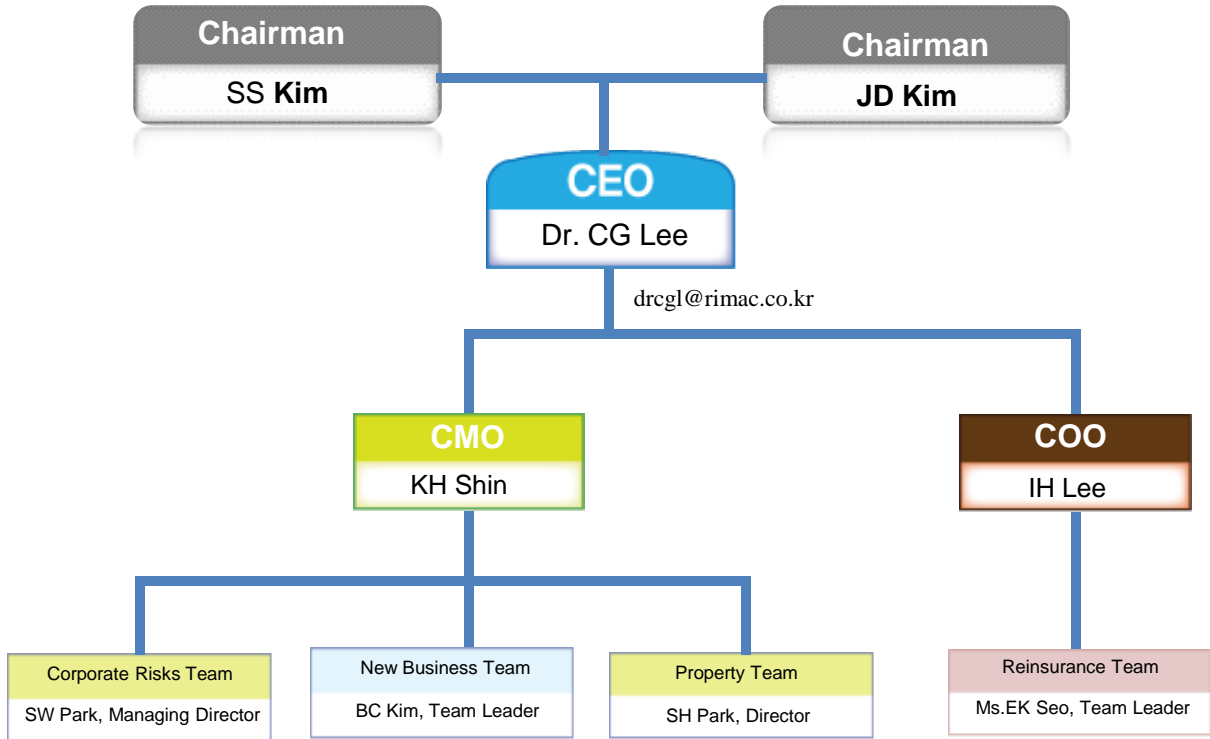
- Provision of exemplary service and advice
- Offering access to domestic & international markets
- Sharing its long-term strategic partners its insights and market intelligence gathered through its expansive network to assist them to better manage and price their risks

**Rimac Insurance Services Co.,Ltd.**

Shalom Bldg 3F, 8 Gyeonghuigung 1-gil,  
Jongno-gu, Seoul, Korea (03176)  
T. +82 2 776 5565 F. +82 735 5575  
www.rimac.co.kr

# Organization Chart

as of June 2017



**Rimac Insurance Services Co.,Ltd.**

Shalom Bldg 3F, 8 Gyeonghuigung 1-gil,  
Jongno-gu, Seoul, Korea (03176)  
T. +82 2 776 5565 F. +82 735 5575  
www.rimac.co.kr

# Management Structure

## Chairman



### Sang Seong Kim

CEO, MG Non-life Insurance  
CEO, Willis Korea  
Senior Managing Director, Samsung Fire Marine Insurance

Tel : +82 2 365 9317  
Email:sskim@rimac.co.kr

## Chairman



### Jeong Dae Kim

Vice-Chairman, Willis Korea  
Executive Managing Director, Korean Reinsurance

Tel : +82 2 365 9323  
Email:jdskim@rimac.co.kr

## CEO & President



### Dr. Chang Gil Lee

CEO, ERGO Daum Direct General Insurance  
Managing Director, CIDO Shipping(H-K) Co.,Ltd.  
Divisional Director, Lotte Insurance  
Ph.D. majored in Business Administration  
Insurance Claims Adjuster  
Arbitrator, Adjunct Professor

Tel : +82 2 365 9301  
Email:drcgl@rimac.co.kr

## COO, Vice Chairman

### ILHO LEE



Chairman, Korean Insurance Brokers Association  
CEO, Jardine Lloyd Thompson  
Vice President, Hankook Insurance Services  
MBA in Insurance  
The College of Insurance(New York)  
Claims Adjuster

Tel : +82 2 365 9305  
Email:ilho@rimac.co.kr

## CMO



### Ki Hong Shin

Standing Advisor, Samsung Fire&Marine Insurance  
Managing Director, Samsung Fire&Marine Insurance  
Overseas Manager, Keyngnam Enterprise Ltd.

Tel : +82 2 365 9302  
Email:khshin@rimac.co.kr

## Managing Director



### Seong Weon Park

Team Leader, Boheom-Net Broker  
Techician of Marine Ins.Team, STX Pan Ocean Shipping  
Director, Korea Insurance Broker's Association

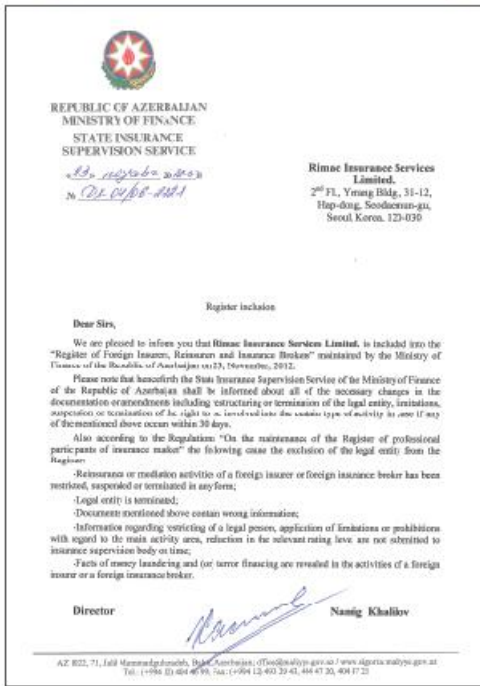
Tel : +82 2 365 9304  
Email:seongweon.park@rimac.co.kr

**Rimac Insurance Services Co.,Ltd.**

Shalom Bldg 3F, 8 Gyeonghuigung 1-gil,  
Jongno-gu, Seoul, Korea (03176)  
T. +82 2 776 5565 F. +82 735 5575  
www.rimac.co.kr

# Smart Performance

## Certificate for Business Registration



## 保險新報

2012년 12월 24일 월요일 제1234호

— 업계 이모저모 —

### 리맥보험중개, 아제르바이잔 진출

리맥보험중개는 최근 아제르바이잔공화국 보험감독청으로부터 보험영업과 재보험사업 중개업무를 할 수 있는 사업능력증명서를 교부받았다고 밝혔다. 김상철 리맥보험중개 사장은 "아제르바이잔의 보험중개법인으로 등록돼 이 나라의 진출한 유진투자, 건설부문의 한국기업에 대해 보험가입안내 등 보험컨설팅 서비스를 직접 제공할 수 있게 됐다"고 말했다.

Insweek Weekly, 24 December 2012

## Rimac attained a formal approval being the first foreign insurance broker in Azerbaijan

November 23, 2012 proved to be a milestone for Rimac, as it has become the first Korean reinsurance & insurance broker in Azerbaijan territory by attaining a formal approval from the Ministry of Finance of the Republic of Azerbaijan. Rimac expects that there will be abundant opportunities to deal directly with Korean interests which enter into Caspian Sea region countries.

**Rimac Insurance Services Co.,Ltd.**

Shalom Bldg 3F, 8 Gyeonghuigung 1-gil,  
Jongno-gu, Seoul, Korea (03176)  
T. +82 2 776 5565 F. +82 735 5575  
www.rimac.co.kr

# Associates

## Non-Life Insurance



## Life Insurance



## Re-Insurance & Broker



**Rimac Insurance Services Co.,Ltd.**

Shalom Bldg 3F, 8 Gyeonghuigung 1-gil,  
Jongno-gu, Seoul, Korea (03176)  
T. +82 2 776 5565 F. +82 735 5575  
www.rimac.co.kr

# Company Information

## Company In General

as of March 2016

Category	Explanation
Company Name	Rimac Insurance Services Co.,Ltd.
Representative	Dr. Chang Gil Lee , CEO & President
Licensed Date	March 8, 2002
Address	Shlom Bldg. 3F. 8 Gyeonghuigung 1-gil, Jongno-gu, Seoul, Korea(03176)
Tel. & Fax.	Tel : +82 2 776 5565, Fax : +82 2 735 5565
Website	www.rimac.co.kr
Person being in touch	Mr. Seong Weon Park (Tel. +82 2 365 9304, E-mail : seongweon.park@rimac.co.kr)

## Location



**Rimac Insurance Services Co.,Ltd.**  
 Shalom Bldg 3F. 8 Gyeonghuigung 1-gil,  
 Jongno-gu, Seoul, Korea (03176)  
 T. +82 2 776 5565 F. +82 735 5575  
 www.rimac.co.kr